

## Handling System for Rack Type Automatic Sorting Table, Dishwashing Driven with 3 Baskets - Left to Right, 1920mm

ITEM # \_\_\_\_\_

MODEL # \_\_\_\_\_

NAME # \_\_\_\_\_

SIS # \_\_\_\_\_

AIA # \_\_\_\_\_



865461 (HSDDS3LR)

Automatic sorting table,  
Dishwasher driven, 3  
baskets, Left>Right, 1920 mm

### Short Form Specification

#### Item No. \_\_\_\_\_

Constructed in 304 AISI stainless steel. Basin with sloping bottom, drain with double strainer baskets. Rack-guides inclined towards the sorting side. Dishwasher driven rack movement. Feeding bars and carriers. Square 40x40mm square legs with height-adjustable feet. Designed for 500x500mm dishwashing baskets. Attachment to the dishwasher on the right side. Basket feed direction: from left to right.

### Main Features

- "Key holes" and "snap on" system reduces the number of screws needed for fast and easy installation.
- Designed to transport 500x500 mm dishwashing baskets.
- Stacking tables for 7 and 8 baskets on request.
- Optional extras: basin wash nozzles for cleaning the basin.
- Driven by the dishwasher.

### Construction

- All surfaces smooth with polished finish.
- Thick welded flanges for sturdy connection between the units.
- Sloping bottom of the table grants a smooth and rapid drainage.
- Stainless steel strainer baskets easy to remove.
- Rack-guides inclined towards the basin.
- Double filter strainer installed on both sides allow the access from both directions.
- Double stainless steel strainer basket for easy operation.
- Constructed in AISI 304 stainless steel with square 40x40mm tubular construction feet and legs.

### Optional Accessories

- Pre-rinse unit (thermostatic mixer and shower) to be mounted on overshell PNC 863136 ☐
- Additional waste rack for dishwasher driven and automatic sorting table PNC 863173 ☐
- Soaking basin for cutlery rack including lifting device for dishwasher driven sorting table PNC 863230 ☐
- Emergency stop kit for Rack Type Dishwasher (not for Basic handling system) PNC 865162 ☐
- Basket support for vertical stacking of baskets (to be used with overshell) PNC 865208 ☐
- Pre-rinse unit (mixer and shower) PNC 865209 ☐
- Double overshell for 3-basket sorting table, 1610 mm PNC 865298 ☐
- Overshell for 3-basket sorting table, 1610 mm PNC 865429 ☐
- Tray slide for 3-basket sorting table, 1620 mm PNC 865433 ☐
- Tray slide fixing brackets (3pcs) PNC 865437 ☐
- Grid undershell for 3-basket sorting table PNC 865438 ☐
- Pre-wash spray unit, 1500 mm PNC 865443 ☐
- Tray slide for sorting table, 500 mm PNC 865444 ☐
- Tray slide with waste hole and rubber ring, 500 mm PNC 865445 ☐
- Dish scraper PNC 865447 ☐

APPROVAL: \_\_\_\_\_



**Electrolux**  
PROFESSIONAL

**Handling System for Rack Type  
Automatic Sorting Table, Dishwashing Driven  
with 3 Baskets - Left to Right, 1920mm**

- Automatic basin wash with timer for 3-basket sorting table PNC 865448 ☐
- Water heating kit for wash basin PNC 865449 ☐
- Foldable tray slide for 3-basket sorting table, 1620 mm PNC 865454 ☐
- Retractable pre-rinse unit with fixed thermostatic water mixer, hose length, 14mm PNC 865460 ☐
- Brackets to support baskets under the sorting table PNC 865478 ☐

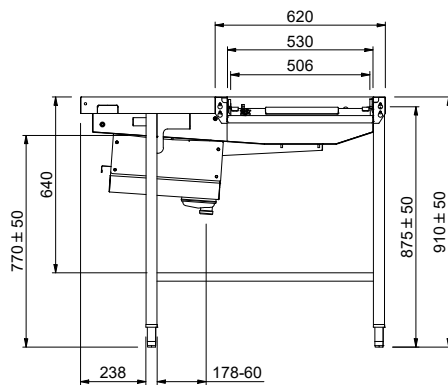




**Electrolux**  
PROFESSIONAL

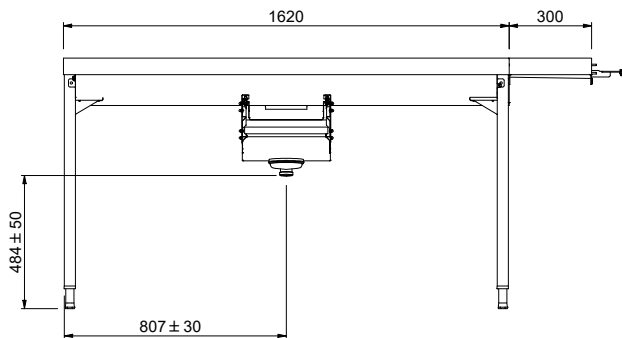
## Handling System for Rack Type Automatic Sorting Table, Dishwashing Driven with 3 Baskets - Left to Right, 1920mm

Side



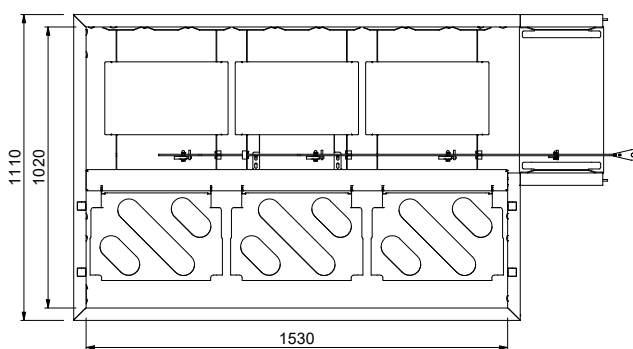
Factory mounted waste rack

Front



D = Drain

Top



### Key Information:

External dimensions, Width:

865461 (HSDDS3LR) 1920 mm

External dimensions, Depth: 1110 mm

External dimensions, Height: 910 mm

Net weight: 42 kg

Height adjustment: 50/50 mm

Basket movement: Left to right

Position to dishwasher: Loading

Basin material: Stainless Steel AISI 304 - EN 1.4301



Handling System for Rack Type  
Automatic Sorting Table, Dishwashing Driven with 3 Baskets - Left to  
Right, 1920mm  
The company reserves the right to make modifications to the products  
without prior notice. All information correct at time of printing.

2025.04.25